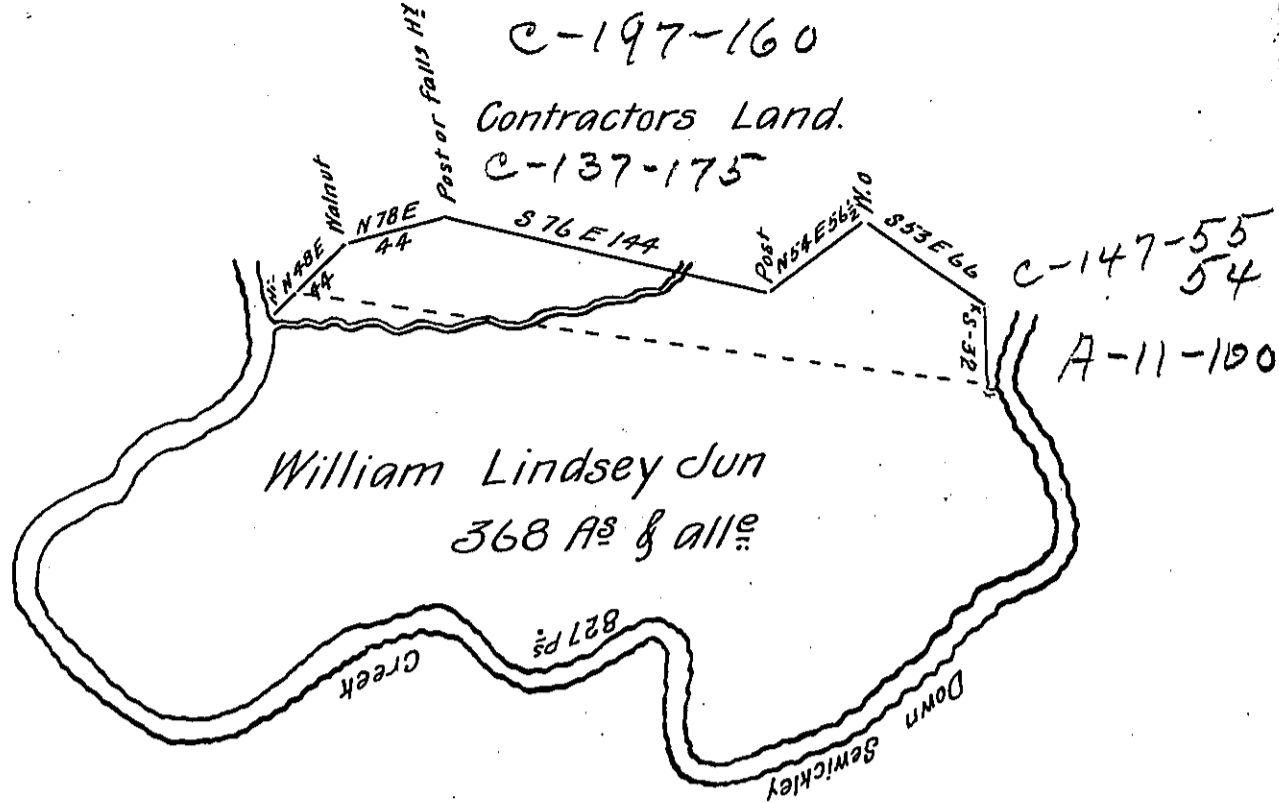


(Survey 260)

Down the Creek the  
Several Courses to H<sup>y</sup>  
Alteration

✓ S 25 E 41 1/2	S 7 E 32
✓ S 17 E 28	S 25 E 60
✓ S 9 W 9	S 18 W 9
✓ S 66 W 40	S 66 W 38
✓ S 45 W 59	S 45 W 54
✓ S 64 W 71	S 64 W 68
✓ S 71 W 15	S 85 W 17
✓ N 40 W 13	N 40 W 13
✓ N 2 E 46	N 2 E 48
✓ N 63 W 15	N 64 W 12
✓ S 66 W 54	S 82 W 7
✓ N 67 W 34	S 65 W 47
✓ N 47 W 42	N 64 W 24
✓ West 4	N 50 W 40
✓ S 67 W 23	N 71 W 21
✓ S 57 W 66	West 15
✓ N 87 W 25	S 64 W 26
✓ N 72 W 30	S 50 W 24
✓ N 42 W 42	S 74 W 49
✓ N 12 E 17	N 70 W 36
✓ N 17 E 20	N 35 W 18
✓ N 63 E 20	N 13 E 15
✓ N 54 E 22	N 57 E 13
✓ N 60 E 49	N 39 E 12
✓ N 46 E 16	N 17 E 27
✓ N 16 E 32	N 15 W 2
to Beg.	



In Pursuance of an Application bearing date April 3<sup>rd</sup> 1769

No 738. Surveyed April 10<sup>th</sup> 1787 the above discribed tract of land situate on Sewickly Creek in Huntington Township Westmorel<sup>d</sup> County Containing three hundred and sixty eight acres & allow<sup>e</sup> &c.

Benj. Lodge D.S.

Daniel Brodhead Esq<sup>r</sup>

Surveyor General.

IN TESTIMONY that the above is a copy of the original remaining on file in the Department of Internal Affairs of Pennsylvania, made conformably to an Act of Assembly approved the 16th day of February, 1833, I have hereunto set my Hand and caused the Seal of said Department to be affixed at Harrisburg, this eighth day of December 1905.

*Joac B. Brown*  
Secretary of Internal Affairs.